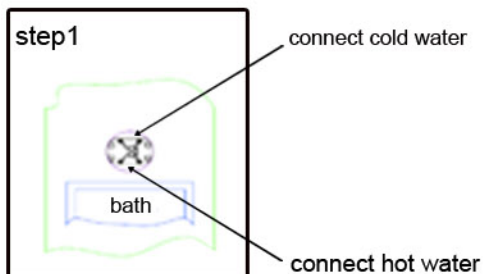


## FREE STANDING BATH MIXER

Congratulations for purchasing this quality free standing bath mixer. Our product is manufactured to Highest quality under strict quality control procedures.

### Free Standing Bath Mixer



## INSTALLATION INSTRUCTIONS

1. Open a hole under floor. Put the base into the hole, tighten the base with 4 fixing screws. Then Connect the hot and cold water source according to the picture.
2. Install the tap body on to the base. Tighten the body with 4 fixing screws. Then open the water source. If there is no any water leaking, please repair the floor and put down the cover plate.
3. Install the shower hose and handle shower on the body.

Remark: If no shower hose and handle shower, step 3 no need.

## WARRANTY TERMS

All products are guaranteed as follows:

1. 5 years guarantee against casting defaults and porosity;
2. 3 years guarantee against cartridge and valve defaults;
3. 12 months guarantee on washers and O rings;
4. 12 months guarantee on finish.

## GENERAL INFORMATION

- When installing this product, the pipes must be flushed clean where the product is being installed.
- The water pressure must be tested. Where the water pressure exceeds 1000Kpa, an approved pressure reducing valve must be fitted.
- Always fit isolating taps to the hot and cold inlet connections in accordance with national plumbing code AS3500.
- Ensure the hoses are not twisted or stretched, are not under tension and not bent to a radius less than 25mm when being installed.
- If the water temperature exceeds 80°C an approved water tempering valve must be fitted.

**Failure to comply with all of the above instructions will void all warranties.**

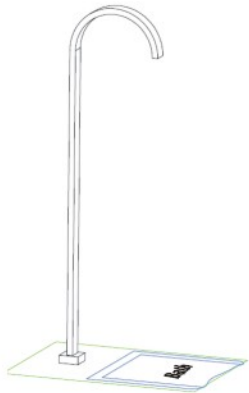
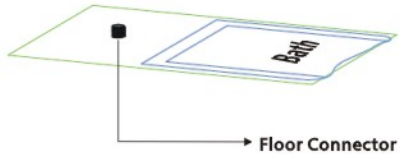
**The warranty will not apply if:**

- The product has been damaged through misuse, neglect accident;
- The product has not been used in accordance with any applicable instruction guide;
- The purchaser has attempted to modify or repair the product;
- The product is not installed by a Registered Plumber.

## FREE STANDING BATH SPOUT

Congratulations for purchasing this quality free standing bath spout. Our product is manufactured to Highest quality under strict quality control procedures.

### **Free Standing Bath spout**



## INSTALLATION INSTRUCTIONS

1. Connect the free standing bath spout with the floor connector and make it has been sealed.
2. Make sure the free standing bath spout is face to the bath.

## WARRANTY TERMS

**All products are guaranteed as follows:**

1. 5 years guarantee against casting defaults and porosity;
2. 3 years guarantee against cartridge and valve defaults;
3. 12 months guarantee on washers and O rings;
4. 12 months guarantee on finish.

## GENERAL INFORMATION

- When installing this product, the pipes must be flushed clean where the product is being installed.
- The water pressure must be tested. Where the water pressure exceeds 1000Kpa, an approved pressure reducing valve must be fitted.
- Always fit isolating taps to the hot and cold inlet connections in accordance with national plumbing code AS3500.
- Ensure the hoses are not twisted or stretched, are not under tension and not bent to a radius less than 25mm when being installed.
- If the water temperature exceeds 80°C an approved water tempering valve must be fitted.

**Failure to comply with all of the above instructions will void all warranties.**

**The warranty will not apply if:**

- The product has been damaged through misuse, neglect accident;
- The product has not been used in accordance with any applicable instruction guide;
- The purchaser has attempted to modify or repair the product;
- The product is not installed by a Registered Plumber.